



TYM

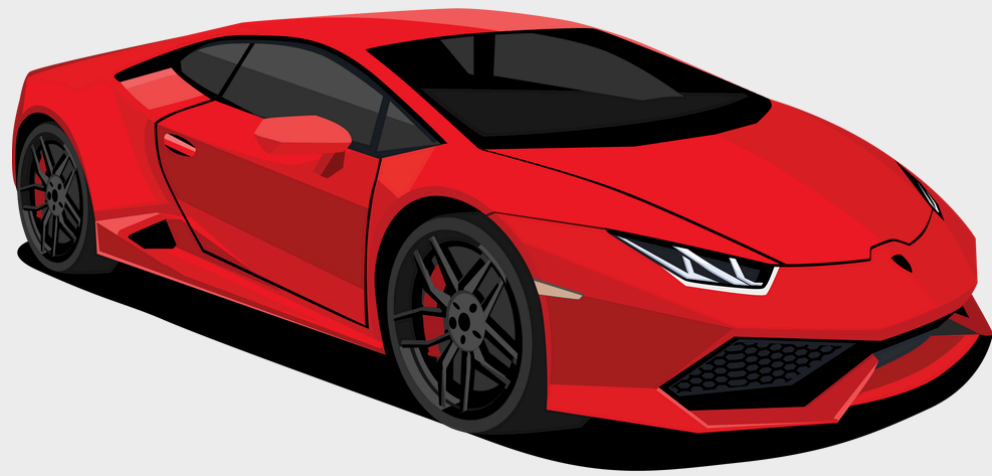
TRIPS AND TRANSPORTATION



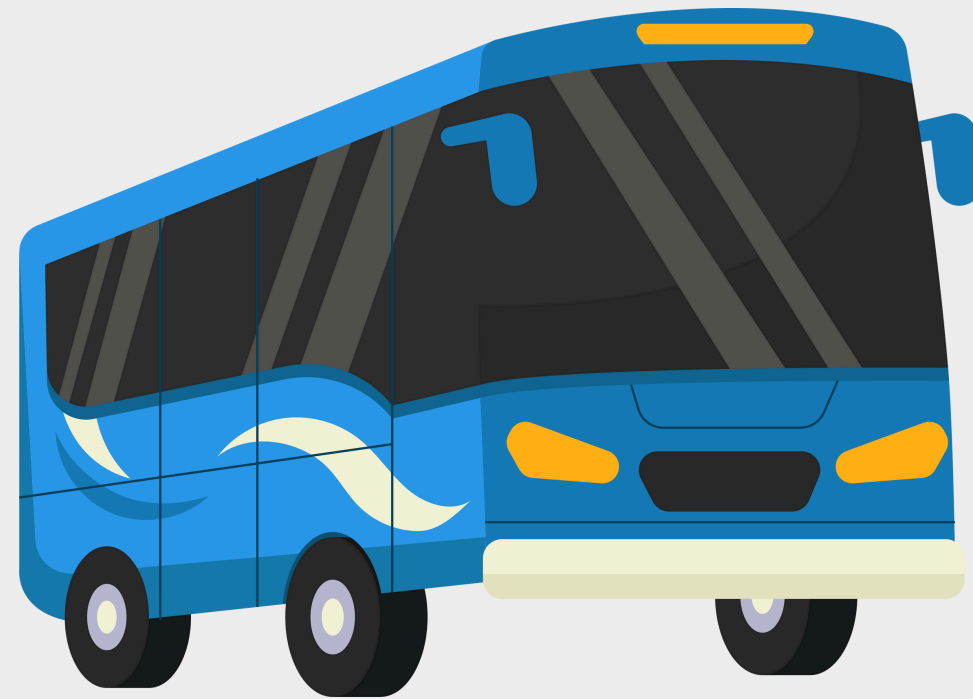
**TYWL: Learn the vocab for trip
and transportation**

YASW: You solve all the activities!

COMMON TRANSPORT WORDS:



CAR

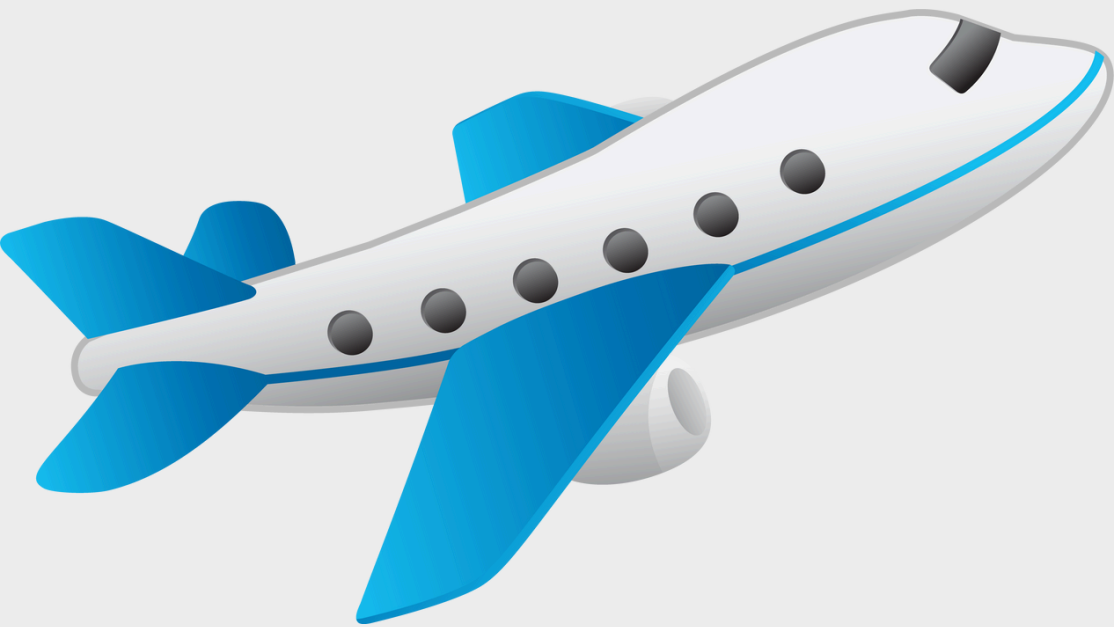


BUS



TRAIN

COMMON TRANSPORT WORDS:



AIRPLANE



BOAT

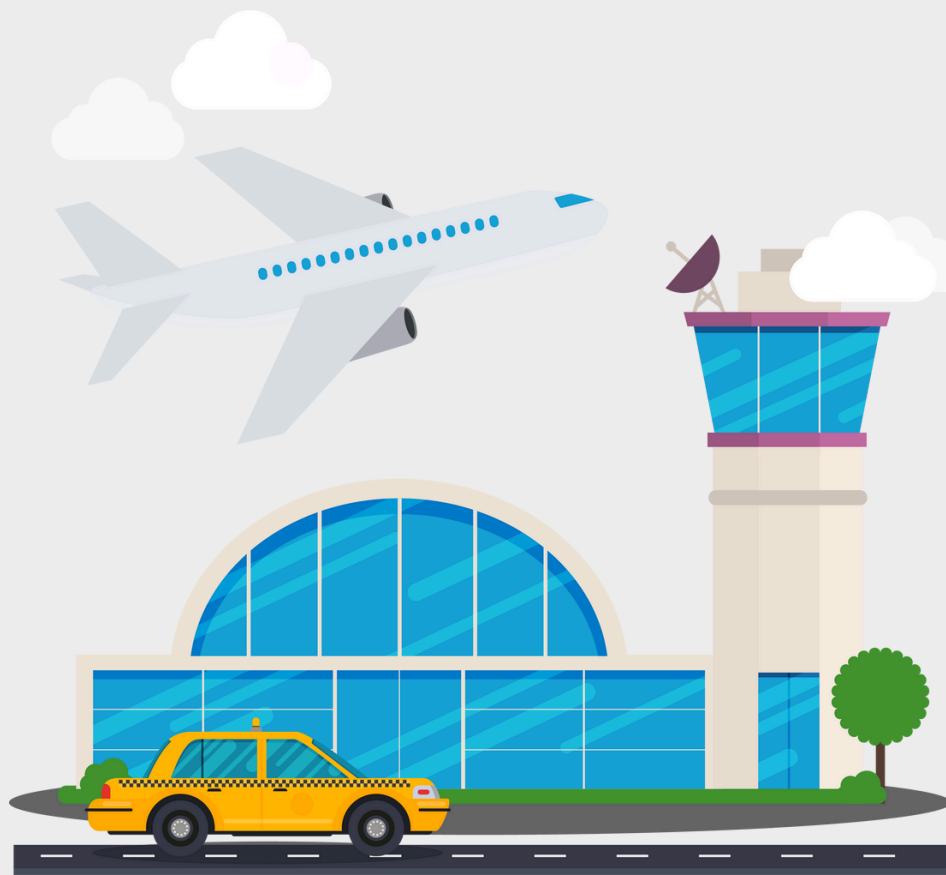


TAXI

COMMON TRANSPORT WORDS:



VOCABULARY FOR PLACES:



AIRPORT



BUS STOP



STATION

VOCABULARY FOR PLACES:



HOTEL



PARK



BEACH

VOCABULARY FOR PLACES:



MUSEUM



ZOO



MALL

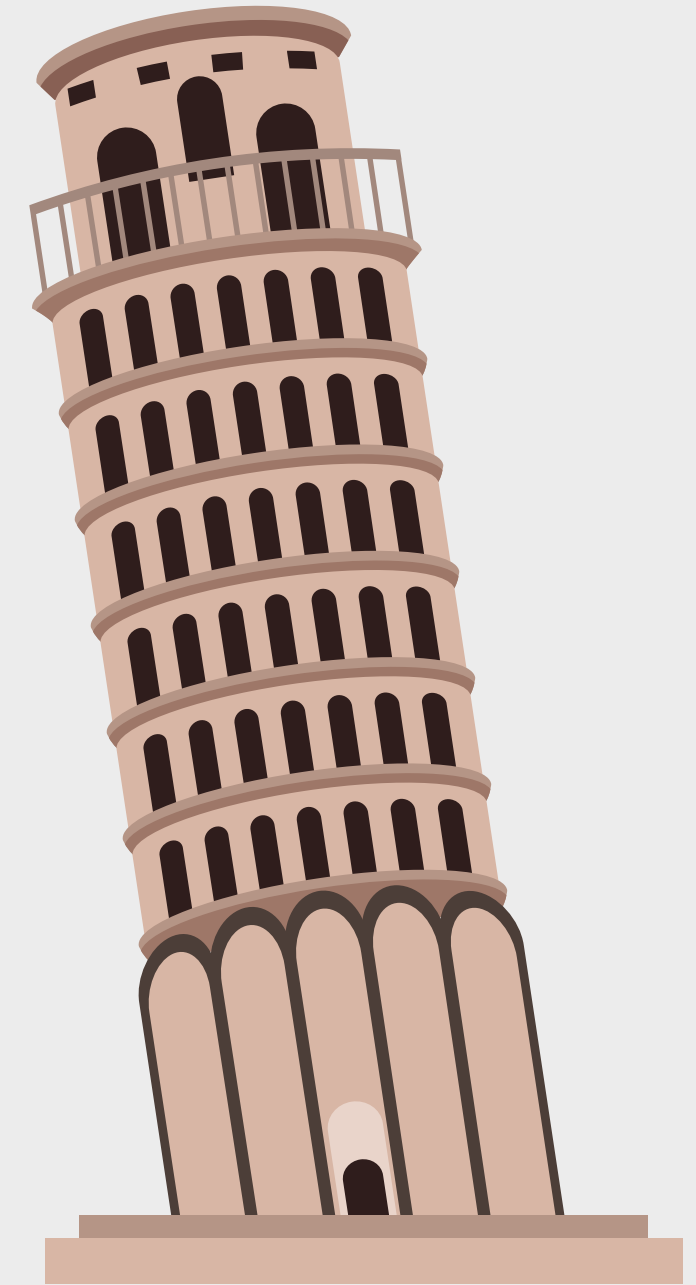
VOCABULARY FOR PLACES:



AMUSEMENT PARK



AQUARIUM

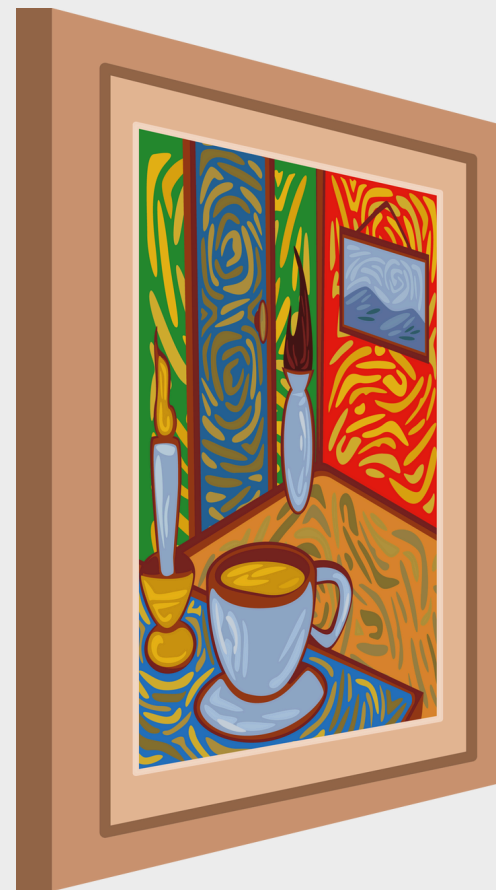


MONUMENT

VOCABULARY FOR PLACES:



SOUVENIR SHOP



ART GALLERY



LAKE

TYPES OF TRIPS



LET'S TALK!

AT THE AIRPORT

A: Hello, where is Gate 5?

B: Over there!

A: Thank you!

B: Have a nice trip!



PRESENT TENSE VERBS



- I travel by plane.
- You walk to school.
- He rides a bike.
- She takes the bus.
- We go to the zoo.
- They run to the station.



PRESENT TENSE VERBS



With "Where":

- Where do you go?
- I go to the museum.
- He goes to the beach.



With "How":

- How do you travel?
- I travel by train.
- She goes by taxi.

ACTIVITY IN CLASS

PLAN A TRIP USING A TRANSPORT MAP

(Draw a simple map with lines showing bus, train, and plane routes. Add icons!)

- Show a starting point and destination.
- Example: “Go by bus from school to the park, then take a taxi to the museum.”



FILL IN THE BLANKS

IN YOUR NOTE BOOK ANSWER THE FOLLOWING QUESTIONS

1. I _____ to the zoo with my family.
 2. She _____ the bus to the hotel.
 3. We _____ the Eiffel Tower in Paris.
 4. They _____ by airplane to New York.
 5. He _____ to the beach every summer.
 6. I _____ my bike to the park.
 7. You _____ to the station quickly.
 8. We _____ the museum and take pictures.
 9. My dad _____ a taxi to the airport.
 10. The tourists _____ on foot around the city.
- travel
 - walk
 - go
 - ride
 - take
 - run
 - visit
 - see
 - take

ACTIVITY IN CLASS

DRAW YOUR DREAM TRIP!

Draw where you want to go and how you get there.



"Draw a car, a plane, and your destination!"



words

boat bus car

ship subway train

truck van



C	T	C	A	R	U	C	Y	T	N
O	X	V	N	B	V	M	F	N	V
S	U	B	W	A	Y	M	B	U	S
T	K	K	D	X	R	S	H	I	P
J	O	W	X	C	A	I	R	X	T
T	R	U	C	K	W	O	V	W	U
W	O	F	Z	B	O	A	T	Z	I
I	T	R	A	I	N	S	B	Y	Y
S	P	E	H	W	R	F	F	L	O
A	B	V	A	N	U	D	W	L	O

words

Haul transport

raoutes freight

Electric speed

passengers commuter

